

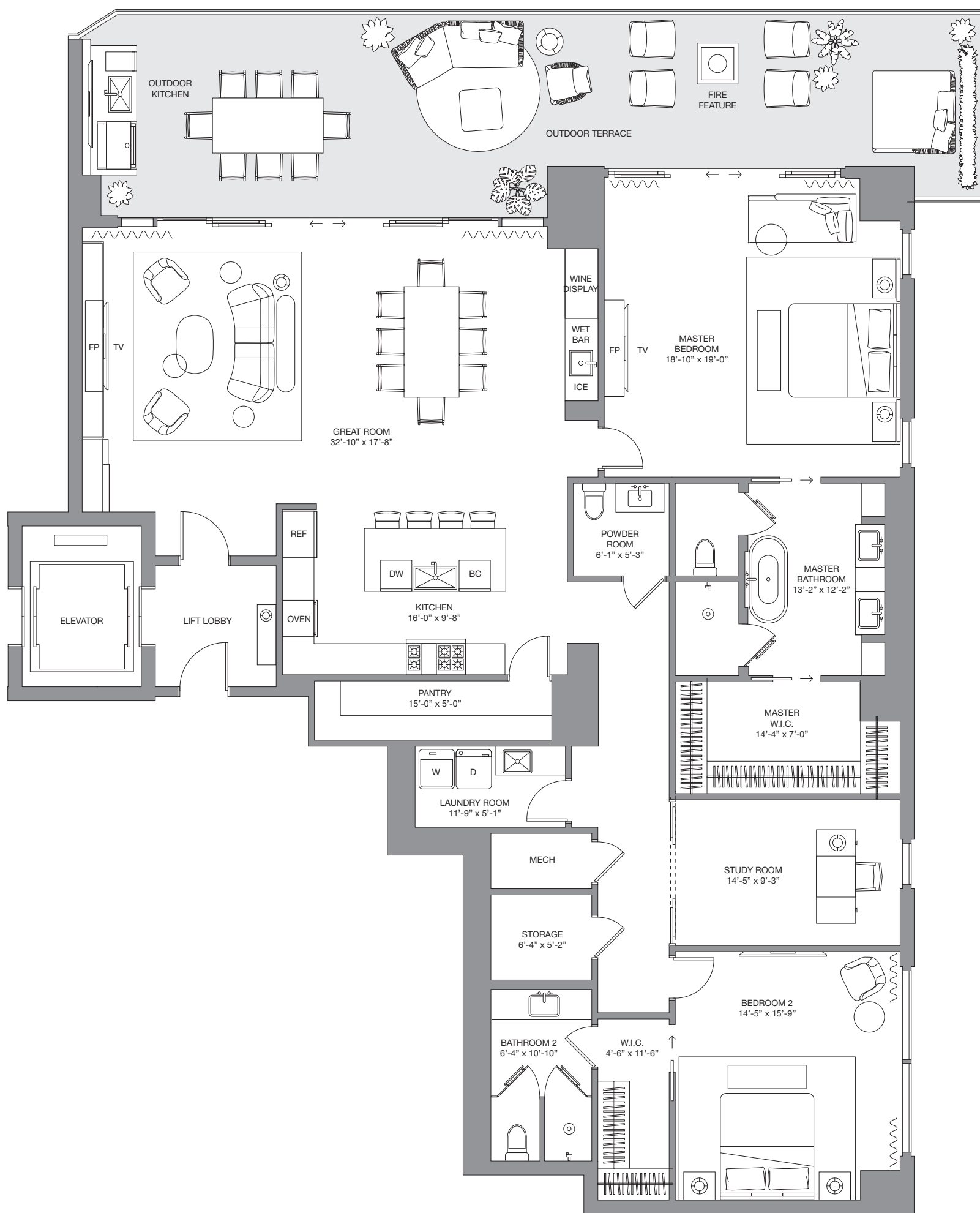


FOUR SEASONS

PRIVATE RESIDENCES

LAS VEGAS

AN AZURE AND LUXUS DEVELOPMENT



STRIP VIEW

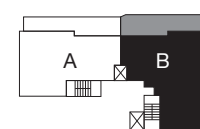
TERRACE RESIDENCE B

2 BEDS 2.5 BATHS

N/ 2B - N/ 6B S/ 2B - S/ 7B

Interior	2,515 SF	234 SM
Terrace	736 SF	68 SM
Total Living Area	3,251 SF	302 SM

BALCONY ON SOUTH LEVEL 2 IS 1,195 SF.



ORAL REPRESENTATIONS CANNOT BE RELIED UPON AS CORRECTLY STATING REPRESENTATIONS OF THE DEVELOPER. FOR CORRECT REPRESENTATIONS, MAKE REFERENCE TO THE NEVADA PUBLIC OFFERING STATEMENT, TO BE FURNISHED BY DEVELOPER TO BUYERS. This communication does not constitute an offer to buy or sell or a solicitation to buy or sell a unit in Four Seasons Private Residences Las Vegas (the "Project"). No solicitation, offer or sale of a unit in the Project will be made in any state or county in which such activity would be unlawful prior to any required registration in such jurisdiction. All prices, plans specifications, features, amenities, floor plans and other depictions are preliminary in nature and subject to change without notice. All square footages set forth in any materials (if any) are approximate and subject to change. Four Seasons Private Residences Las Vegas are not owned, developed or sold by Four Seasons Hotels Limited or its affiliates (Four Seasons). The developer, Azure Resorts and Luxus Developments, uses the Four Seasons trademarks and tradenames under a license from Four Seasons Hotels Limited. The marks "FOUR SEASONS," "FOUR SEASONS HOTELS AND RESORTS," any combination thereof and the Tree Design are registered trademarks of Four Seasons Hotels Limited in Canada and U.S.A. and of Four Seasons Hotels (Netherlands) Ltd. elsewhere. ALL DIMENSIONS AND ANY SQUARE FOOTAGE NUMBERS ARE ESTIMATES WHICH WILL VARY WITH ACTUAL CONSTRUCTION. ALL FLOOR PLANS, SPECIFICATIONS AND OTHER DEVELOPMENT PLANS ARE SUBJECT TO CHANGE AND WILL NOT NECESSARILY ACCURATELY REFLECT THE FINAL PLANS AND SPECIFICATIONS FOR THE DEVELOPMENT. SELLER RESERVES THE RIGHT TO MAKE MODIFICATIONS AND CHANGES IN DESIGN OF THE PROJECT, BUILDINGS, CONDOMINIUM UNITS, PRODUCTS AND FINISHES IN ITS SOLE DISCRETION IN ACCORDANCE WITH TERMS OF APPLICABLE LAWS AND REGULATIONS. ALL INFORMATION OR IMAGES REFLECTED ON THE ATTACHED PLAN (INCLUDING PLACEMENT OF FURNITURE, FIXTURES AND EQUIPMENT) IS FOR INFORMATIONAL PUPOSES ONLY SHOULD NOT BE RELIED ON.